



MAX - MIN



CONSTRUCTION	VLOC
PILE FIBER COMPOSITION	100% Solution Dyed Olefin
YARN TYPE	BCF
PILE WEIGHT	785 g/m <sup>2</sup>
NUMBER OF TUFTS	213300/m <sup>2</sup>
TUFTING GAUGE	1/12"
PRIMARY BACKING	Non-Woven
SECONDARY BACKING	Stablesield - 100% Vinyl
TILE SIZE	50 cm x 50 cm
PILE HEIGHT	3.0 mm / 6.0 mm
TOTAL PILE HEIGHT	8.5 mm
PILE TREATMENT	INVISTA Anti-Soil Treatment (Optional)
RECOMMENDED INSTALLATION	Quarter Turn, Brick, Ashlar or Herringbone

# SPECIFICATIONS

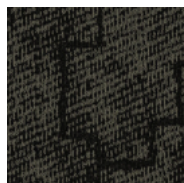




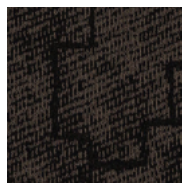
# COLOURLINE



Max 743



Max 745



Max 748



Max 754



Max 755



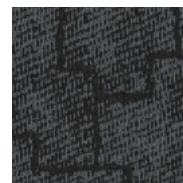
Max 758



Max 772



Max 773



Max 775



Max 776



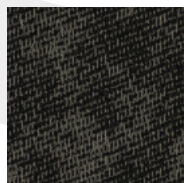
Max 778



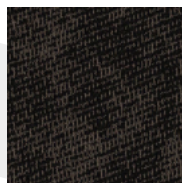
Max 742



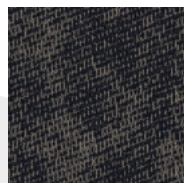
Min 743



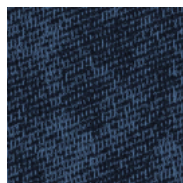
Min 745



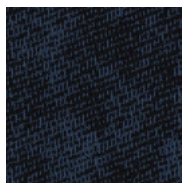
Min 748



Min 754



Min 755



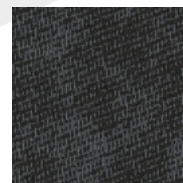
Min 758



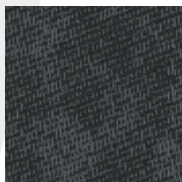
Min 772



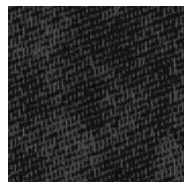
Min 773



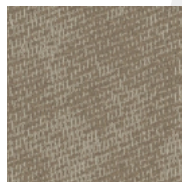
Min 775



Min 776



Min 778



Min 742

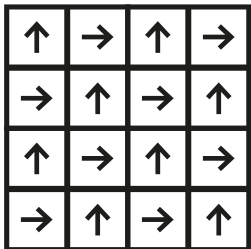




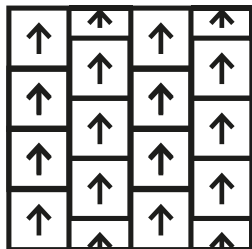


# HOW TO INSTALL

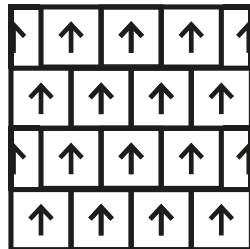
**Quarter  
Turn**



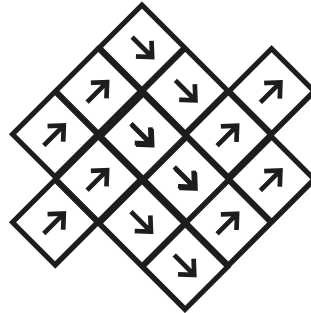
**Ashlar**



**Brick**



**Herringbone**





Standard  
*CARPETS*

[www.standardcarpets.com](http://www.standardcarpets.com)